

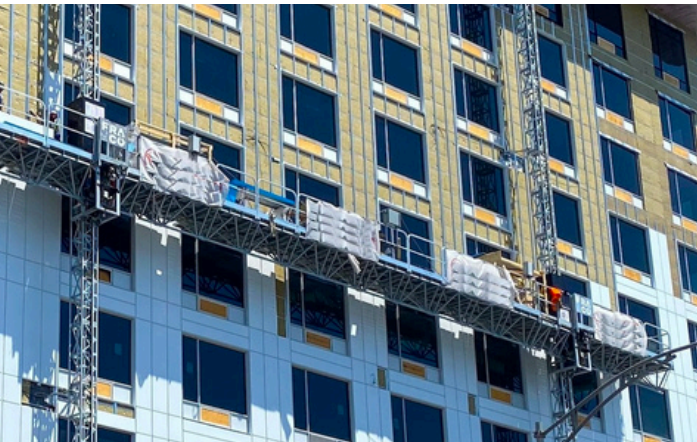


**FRA
CO**

WORK
PLATFORM

F
M
C

3



FMC-3 THE ULTIMATE MASTCLIMBER



ADAPTABILITY AND MOBILITY

Manufactured in Canada and designed to meet North American safety standards, the FMC-3 is an optimal access solution for light construction and restoration projects.

What distinguishes this work platform is its remarkable adaptability and its compact size. The system of telescopic outriggers allows for a maximum width of 8 ft. With options for a single-mast 33' (10 m) or twin-mast 96 ft (29 m) configuration, the work platform adapts to various building shapes (balconies, angles, corners, inclinations). The twin-mast system boasts a maximum capacity of 6000 lb.

The FMC-3 utilizes a reliable rack and pinion lift system, enabling a speed of 24' per minute (7.3 m/min). It is available with either a gasoline or an electrical engine, complemented by a comprehensive safety device system.

Outstanding personalized engineering service can be provided, including layout, engineering plans, inspection procedures, and other technical details.

Experience efficiency and flexibility with the FMC-3 – your trusted solution for versatile and secure elevated work.

FMC-3 TECHNICAL SPECIFICATIONS

	IMPERIAL	
MAXIMUM LENGTH OF PLATFORM WITH SINGLE MAST, OR (DOUBLE MASTS)	* 33'-0", or (96'-0")	* 10 m, or (29 m)
MAXIMUM PAYLOAD (PER SINGLE MAST UNIT)	3 000 lb	1360 kg
LIFTING SPEED	24 ft / min	7.31 m / min
MAXIMUM WORKING AREA WIDTH (WA-W), AND LOADING AREA WIDTH (LA-W)	(WA-W) 2'-6", and (LA-W) 5'-0"	(WA-W) 0.750 m, and (LA-W) 1.52 m
MAXIMUM INSTALLATION HEIGHT	395'-0"	120 m
MAXIMUM FREESTANDING HEIGHT (SINGLE MAST ONLY)	30'	9.1 m
STANDARD VERTICAL DISTANCE BETWEEN ANCHORS	20'-0" ± 3'-0"	6.1 m ± 0.915 m
LIFTING SYSTEM	RACK AND PINION (MODULE 8)	
TYPES OF ENGINE, OR (OTHER OPTIONS)	13 HP HONDA GASOLINE ENGINE, or (10 HP ELECTRICAL MOTOR)	
AMBIENT TEMPERATURE RATING MIN/MAX	MIN -4°F / MAX 104°F	MIN -20°C / MAX 40°C
MAST SECTION DIMENSIONS L x W x H (WEIGHT)	18" x 18" x 4'-11" in (236 lb)	0.500 m x 0.500 m x 1.5 m (107 kg)
PLATFORM EXTENSION DIMENSIONS L x W x H (WEIGHT)	5' x 3'-10" x 2'-10" (290 lb)	1.5 m x 1.17 m x 0.86 m (132 kg)
REDUCED PLATFORM EXTENSION DIMENSIONS L x W x H (WEIGHT)	2'-6" x 3'-10" x 2'-10" (195 lb)	0.750 m x 1.17 m x 0.86 m (88 kg)
STANDARD COMPLIANCE	ANSI A92.9; CSA B354.9	

LEGEND: * The maximum platform lengths may be subject to load reduction.



CANADA +1 800 267.0094
+1 450 658.0094
USA +1 888 372.2648